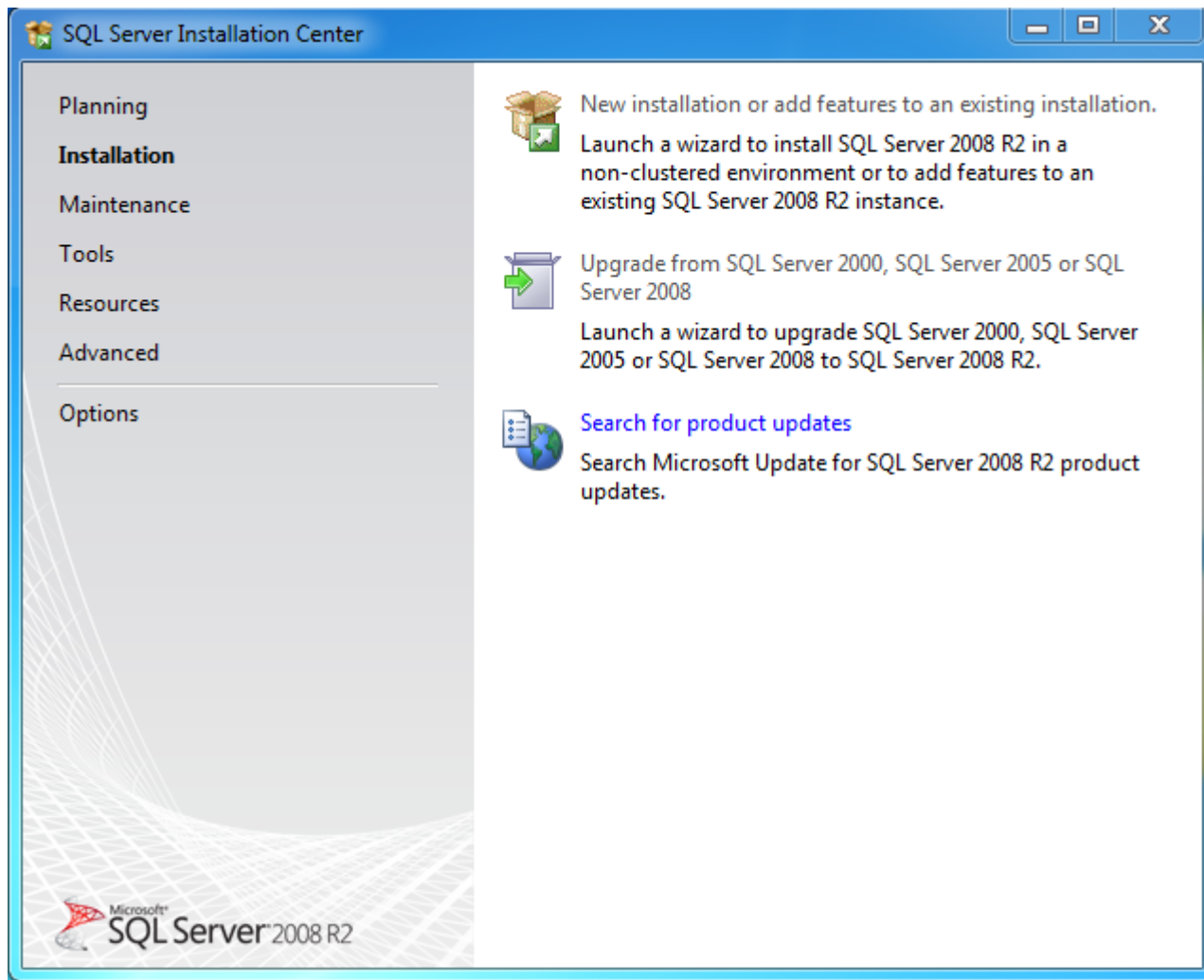


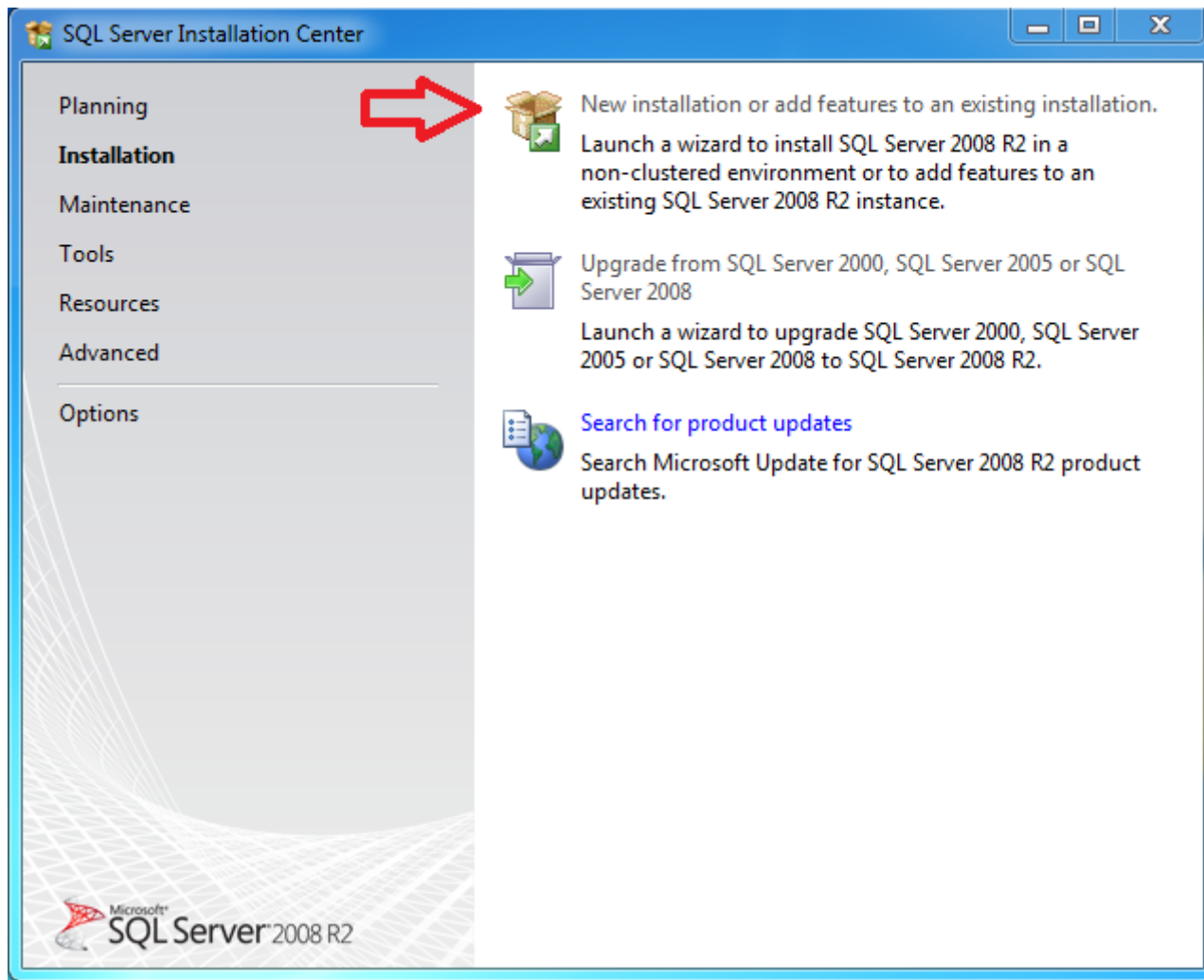
**شرکت فرآیند سازان صنعت محور**

[www.fssm.ir](http://www.fssm.ir)

**نسخه: ۱۳۹۵/۰۱/۱۴**

**آموزش نصب SQL Server 2008R2**





## License Terms

To install SQL Server 2008 R2, you must accept the Microsoft Software License Terms.

### License Terms

Setup Support Files



#### MICROSOFT SOFTWARE LICENSE TERMS

#### MICROSOFT SQL SERVER 2008 R2 EXPRESS WITH TOOLS

#### MICROSOFT SQL SERVER 2008 R2 EXPRESS WITH ADVANCED SERVICES

These license terms are an agreement between Microsoft Corporation (or based on where you live, one of its affiliates) and you. Please read them. They apply to the software named above, which includes the media on which you received it, if any. The terms also apply to any Microsoft

- updates,
- supplements,
- Internet-based services, and

 Copy  Print

☒ I accept the license terms.

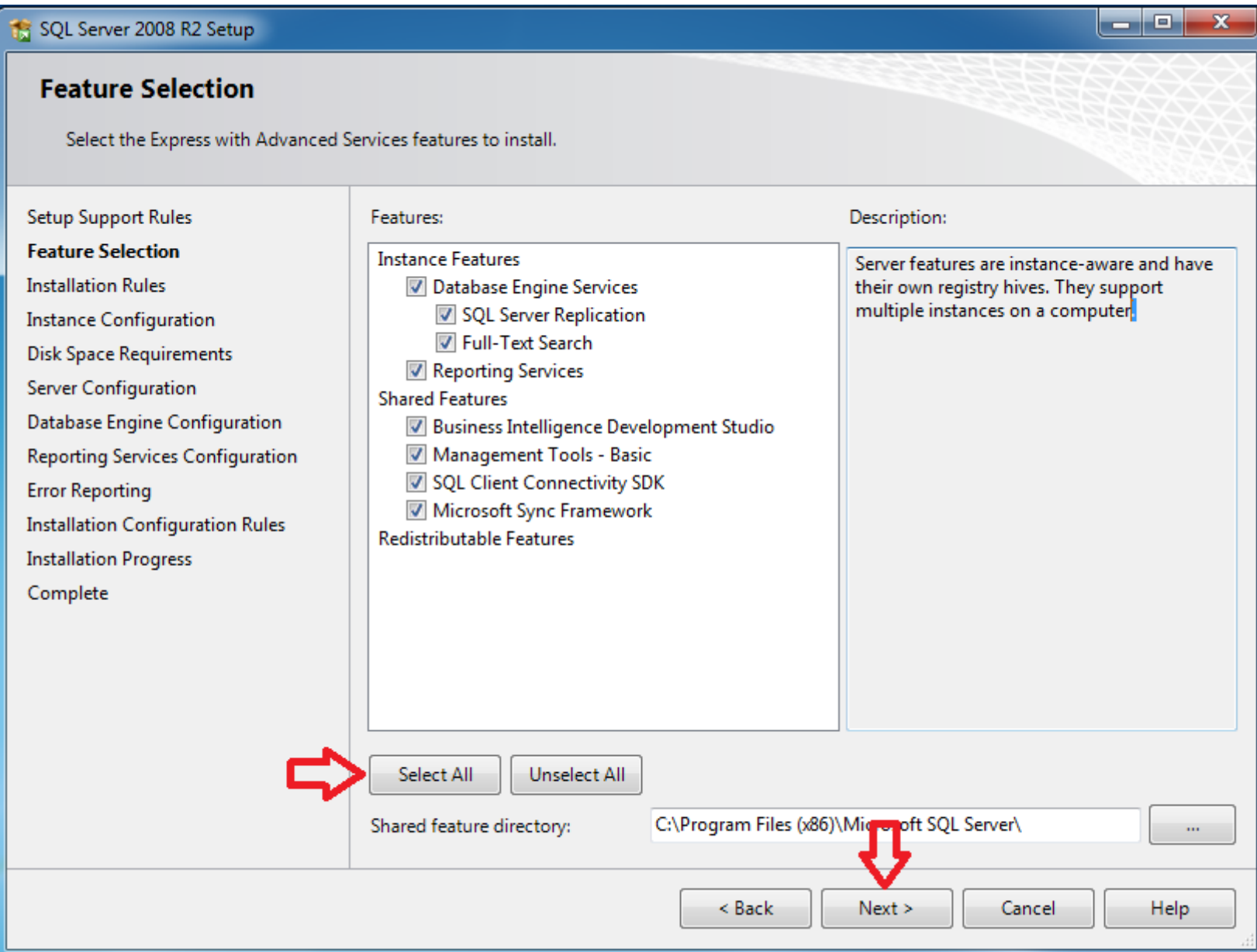
☐ Send feature usage data to Microsoft. Feature usage data includes information about your hardware configuration and how you use SQL Server and its components.

[See the SQL Server 2008 R2 Privacy Statement for more information.](#)

< Back

Next >

Cancel



## Instance Configuration

Specify the name and instance ID for the instance of SQL Server. Instance ID becomes part of the installation path.

Setup Support Rules

Feature Selection

Installation Rules

**Instance Configuration**

Disk Space Requirements

Server Configuration

Database Engine Configuration

Reporting Services Configuration

Error Reporting

Installation Configuration Rules

Installation Progress

Complete

☒ Default instance

☐ Named instance:

SQLExpress

Instance ID:

MSSQLSERVER

Instance root directory:

C:\Program Files (x86)\Microsoft SQL Server\

SQL Server directory:

C:\Program Files (x86)\Microsoft SQL  
Server\MSSQL10\_50.MSSQLSERVER

Reporting Services directory:

C:\Program Files (x86)\Microsoft SQL Server\MSRS10\_50.MSSQLSERVER

Installed instances:

Instance Name	Instance ID	Features	Edition	Version

< Back

Next >

Cancel

Help

SQL Server 2008 R2 Setup

## Server Configuration

Specify the service accounts and collation configuration.

Setup Support Rules

Feature Selection

Installation Rules

Instance Configuration

Disk Space Requirements

**Server Configuration**

Database Engine Configuration

Reporting Services Configuration

Error Reporting

Installation Configuration Rules


Installation Progress

Complete

Service AccountsCollation

Microsoft recommends that you use a separate account for each SQL Server service.

Service	Account Name	Password	Startup Type
SQL Server Database Engine	NT AUTHORITY\NETW...		Automatic ▼
SQL Server Reporting Services	NT AUTHORITY\NETW...		Automatic ▼
SQL Full-text Filter Daemon Laun...	NT AUTHORITY\LOCA...		Manual
SQL Server Browser	NT AUTHORITY\LOCA...		Disabled ▼

 Use the same account for all SQL Server services

< Back

Next >

Cancel

Help

Use the same account for all SQL Server 2008 R2 services

Specify a user name and password for all SQL Server service accounts.

Account Name:

Browse...

Password:



NT AUTHORITY\NETWORK SERVICE  
NT AUTHORITY\SYSTEM

OK

Cancel

SQL Server 2008 R2 Setup

## Server Configuration

Specify the service accounts and collation configuration.

Setup Support Rules  
Feature Selection  
Installation Rules  
Instance Configuration  
Disk Space Requirements  
**Server Configuration**  
Database Engine Configuration  
Reporting Services Configuration  
Error Reporting  
Installation Configuration Rules  
Installation Progress  
Complete

Service Accounts Collation



Database Engine:

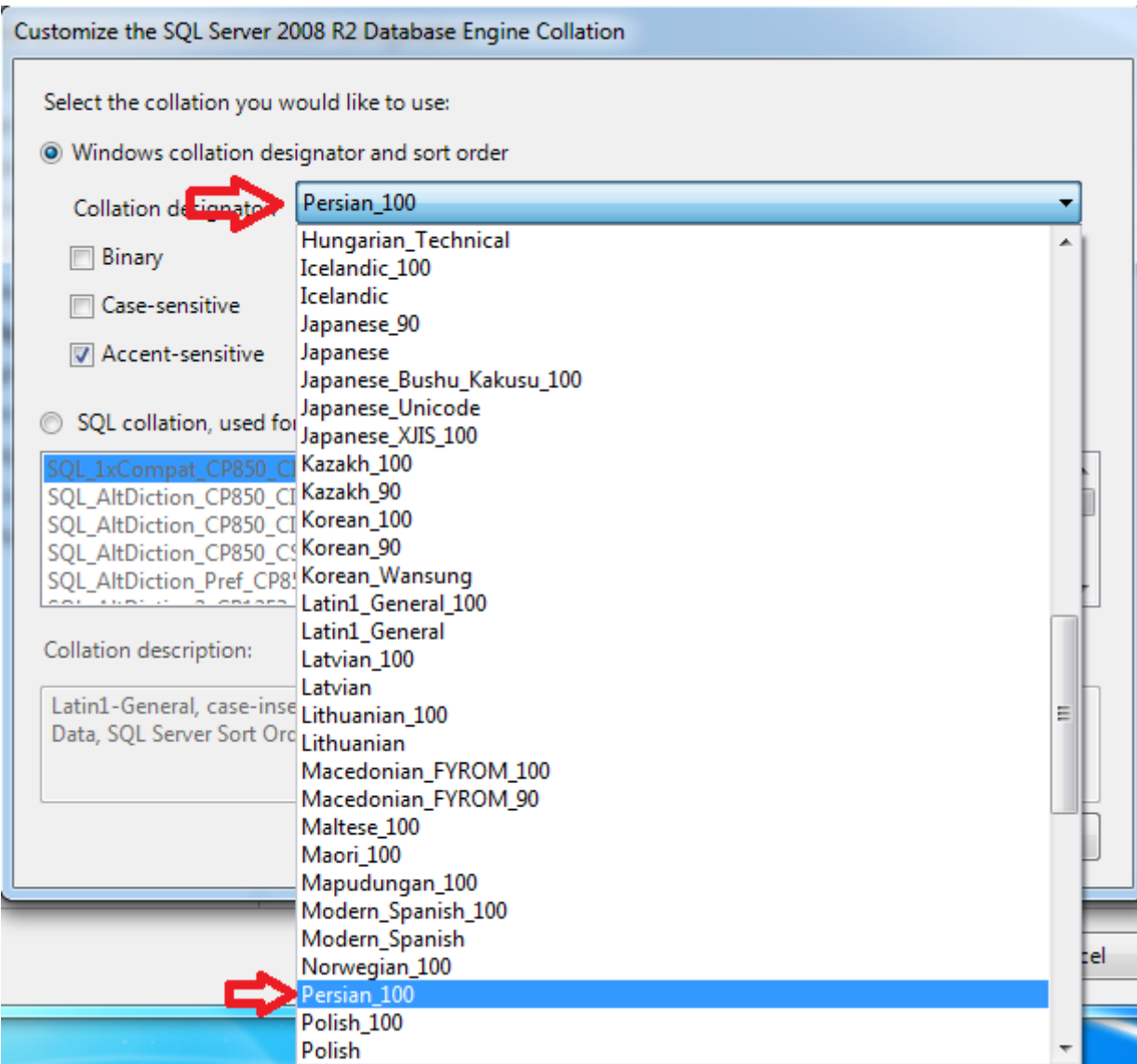
Arabic\_CI\_AS

Latin1-General, case-insensitive, accent-sensitive, kanatype-insensitive, width-insensitive for Unicode Data, SQL Server Sort Order 52 on Code Page 1252 for non-Unicode Data

Customize...

< Back Next > Cancel Help





Customize the SQL Server 2008 R2 Database Engine Collation

Select the collation you would like to use:

☒ Windows collation designator and sort order

Collation designator: Persian\_100

- |  |  |
|--|--|
| <input type="checkbox"/> Binary                      | <input type="checkbox"/> Binary-code point |
| <input type="checkbox"/> Case-sensitive              | <input type="checkbox"/> Kana-sensitive    |
| <input checked="" type="checkbox"/> Accent-sensitive | <input type="checkbox"/> Width-sensitive   |

☐ SQL collation, used for backwards compatibility

SQL\_1xCompat\_CP850\_CI\_AS  
SQL\_AltDiction\_CP850\_CI\_AI  
SQL\_AltDiction\_CP850\_CI\_AS  
SQL\_AltDiction\_CP850\_CS\_AS  
SQL\_AltDiction\_Pref\_CP850\_CI\_AS

Collation description:

Latin1-General, case-insensitive, accent-sensitive, kanatype-insensitive, width-insensitive for Unicode Data, SQL Server Sort Order 49 on Code Page 850 for non-Unicode Data



OK

Cancel

SQL Server 2008 R2 Setup

## Server Configuration

Specify the service accounts and collation configuration.

- Setup Support Rules
- Feature Selection
- Installation Rules
- Instance Configuration
- Disk Space Requirements
- Server Configuration**
- Database Engine Configuration
- Reporting Services Configuration
- Error Reporting
- Installation Configuration Rules
- Installation Progress
- Complete

Service AccountsCollation

Database Engine:

Persian\_100\_CI\_AS

Persian-100, case-insensitive, accent-sensitive, kanatype-insensitive, width-insensitive

Customize...

< Back

Next >

Cancel

Help



## Database Engine Configuration

Specify Database Engine authentication security mode, administrators and data directories.

Setup Support Rules

Feature Selection

Installation Rules

Instance Configuration

Disk Space Requirements

Server Configuration

**Database Engine Configuration**

Reporting Services Configuration

Error Reporting

Installation Configuration Rules

Installation Progress

Complete

Account Provisioning

Data Directories

Specify the authentication mode and administrators for the Database Engine.

Authentication Mode

☐ Windows authentication mode

☒ Mixed Mode (SQL Server authentication and Windows authentication)

Specify the password for the SQL Server system administrator (sa) account.

Enter password:

.....

Confirm password:

.....

Specify SQL Server administrators

David-PC\David (David)

SQL Server administrators have unrestricted access to the Database Engine.

Add Current User

Add...

Remove

< Back

Next >

Cancel

Help

SQL Server 2008 R2 Setup

## Reporting Services Configuration

Specify the Reporting Services configuration mode.

- Setup Support Rules
- Feature Selection
- Installation Rules
- Instance Configuration
- Disk Space Requirements
- Server Configuration
- Database Engine Configuration
- Reporting Services Configuration**
- Error Reporting
- Installation Configuration Rules
- Installation Progress
- Complete

☒ Install the native mode default configuration.


Setup will install the report server and configure it in Native mode to use the default values. The report server is usable as soon as Setup is finished.

☐ Install the SharePoint integrated mode default configuration.

Setup will create the report server database in SharePoint integrated mode and configure the report server to use the default values. However, integrated operations will not be supported until a minimal installation of a SharePoint product or technology is deployed on the report server computer and the Reporting Services Add-in for SharePoint Technologies is installed and configured on the instance of the SharePoint product or technology you are using.

☐ Install, but do not configure the report server.

Setup will install, but will not configure, the report server software. After installation is finished, you can use the Reporting Services Configuration tool to set options that are required to run the report server.



< Back   **Next >**   Cancel   Help

## Error Reporting

Help Microsoft improve SQL Server features and services.

Setup Support Rules

Feature Selection

Installation Rules

Instance Configuration

Disk Space Requirements

Server Configuration

Database Engine Configuration

Reporting Services Configuration

**Error Reporting**

Installation Configuration Rules

Installation Progress

Complete

Specify the information that you would like to automatically send to Microsoft to improve future releases of SQL Server. These settings are optional. Microsoft treats this information as confidential. Microsoft may provide updates through Microsoft Update to modify feature usage data. These updates might be downloaded and installed on your machine automatically, depending on your Automatic Update settings.

[See the SQL Server 2008 R2 Privacy Statement for more information.](#)

[Read more about Microsoft Update and Automatic Update.](#)

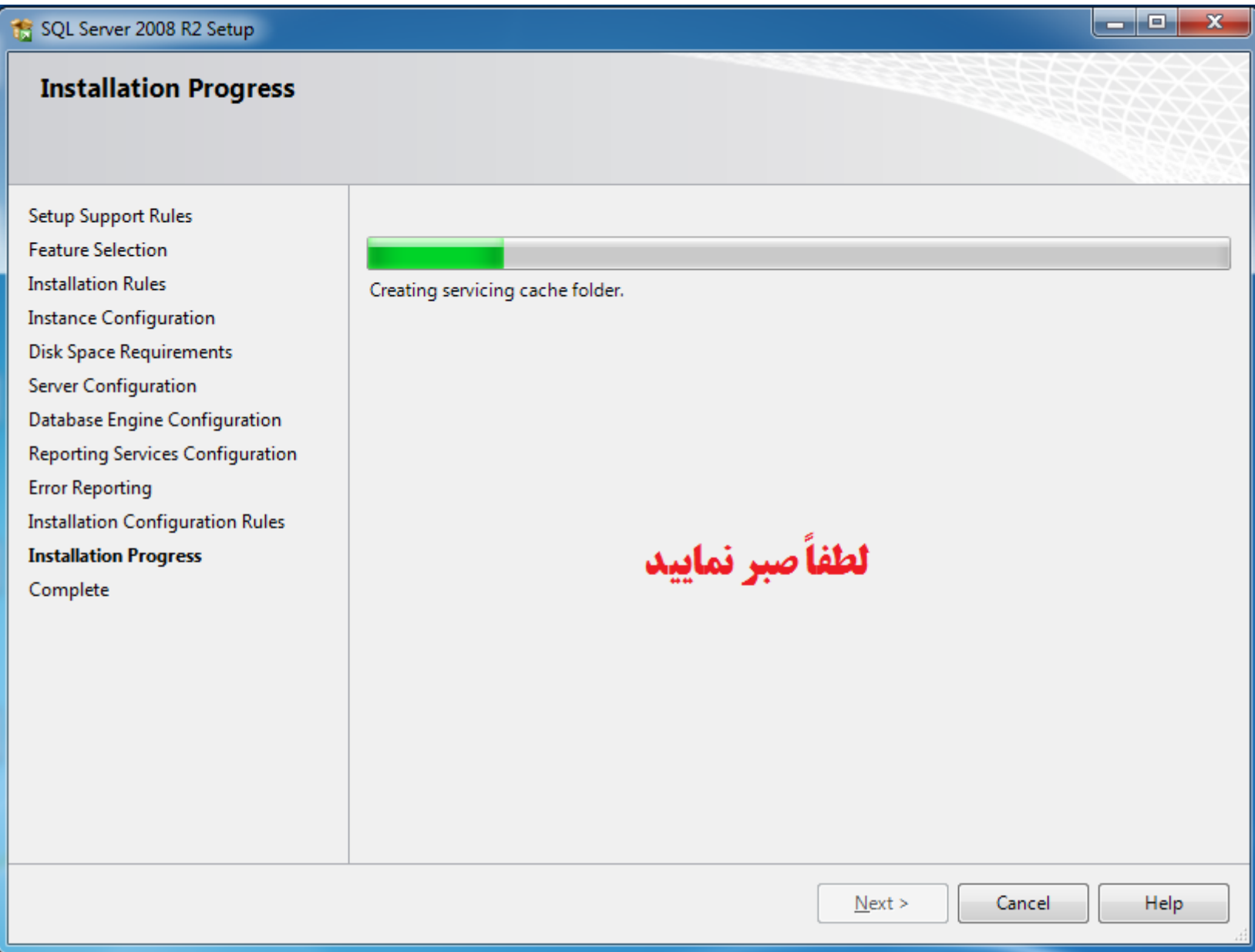
☐ Send Windows and SQL Server Error Reports to Microsoft or your corporate report server. This setting only applies to services that run without user interaction.

< Back

Next >

Cancel

Help



## Complete

## Setup Support Rules

## Installation Rules

## Instance Configuration

## Disk Space Requirements

## Server Configuration

## Database Engine Configuration

## Reporting Services Configuration

## Error Reporting

## Installation Configuration Rules

## Installation Progress

Complete

[C:\Program Files \(x86\)\Microsoft SQL Server\100\Setup Bootstrap\Log\20160329\\_164113\SSummary\\_David-PC\\_20160329\\_164113.txt](#)

Information about the Setup operation or possible next steps:

✔ Your SQL Server 2008 R2 installation completed successfully.

Supplemental Information:

The following notes apply to this release of SQL Server only.

## Microsoft Update

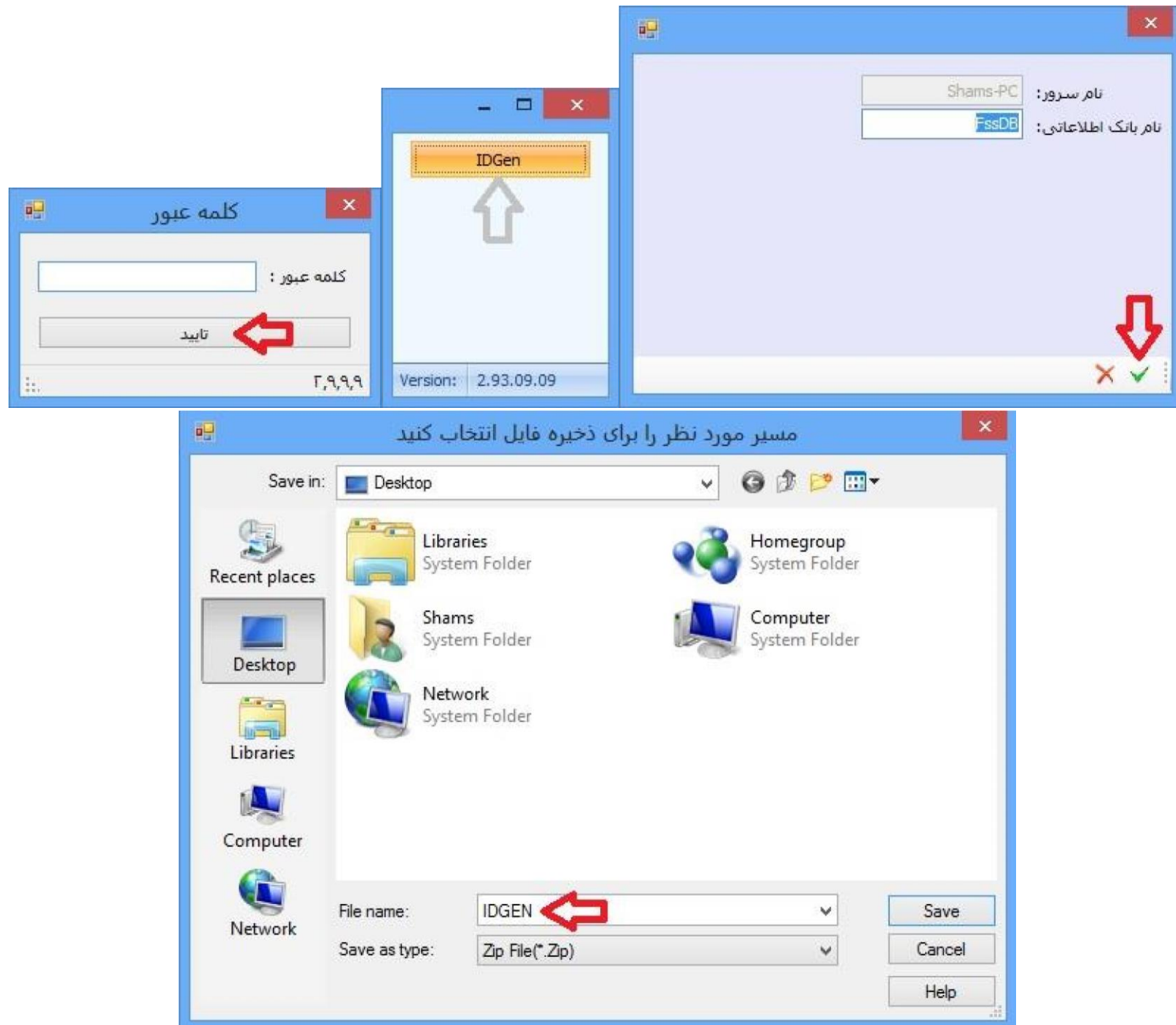
For information about how to use Microsoft Update to identify updates for SQL Server 2008 R2, see the Microsoft Update Web site at <http://go.microsoft.com/fwlink/?LinkId=108409>.

## Samples

Close

Help

## آموزش ساخت IDGEN



# آموزش AutoDBRestore2008

The screenshot shows the 'Database Restore' window of AutoDBRestore2008. The window is divided into several sections: 'DataBase Info', 'Options', and 'Files'. Red numbers 1 through 5 are placed next to specific fields and buttons to indicate the steps for restoring a database.

**DataBase Info**

- Server: localhost
- Database: fssdb **1**
- ☐ Windows Authentication
- Username: sa
- Password: \*\*\*\*\* **2** (with a red arrow pointing to the password field)

**Options**

- ☐ Overwrite
- ☐ Replication
- ☒ Recovery
- ☐ Original File Names
- ☒ Database ☐ Log ☐ File

**Files**

- Restore Path: C:\FSSM **3**
- Backup File: C:\FSSM\Application\fssdb.bak **4**

**5** Restore

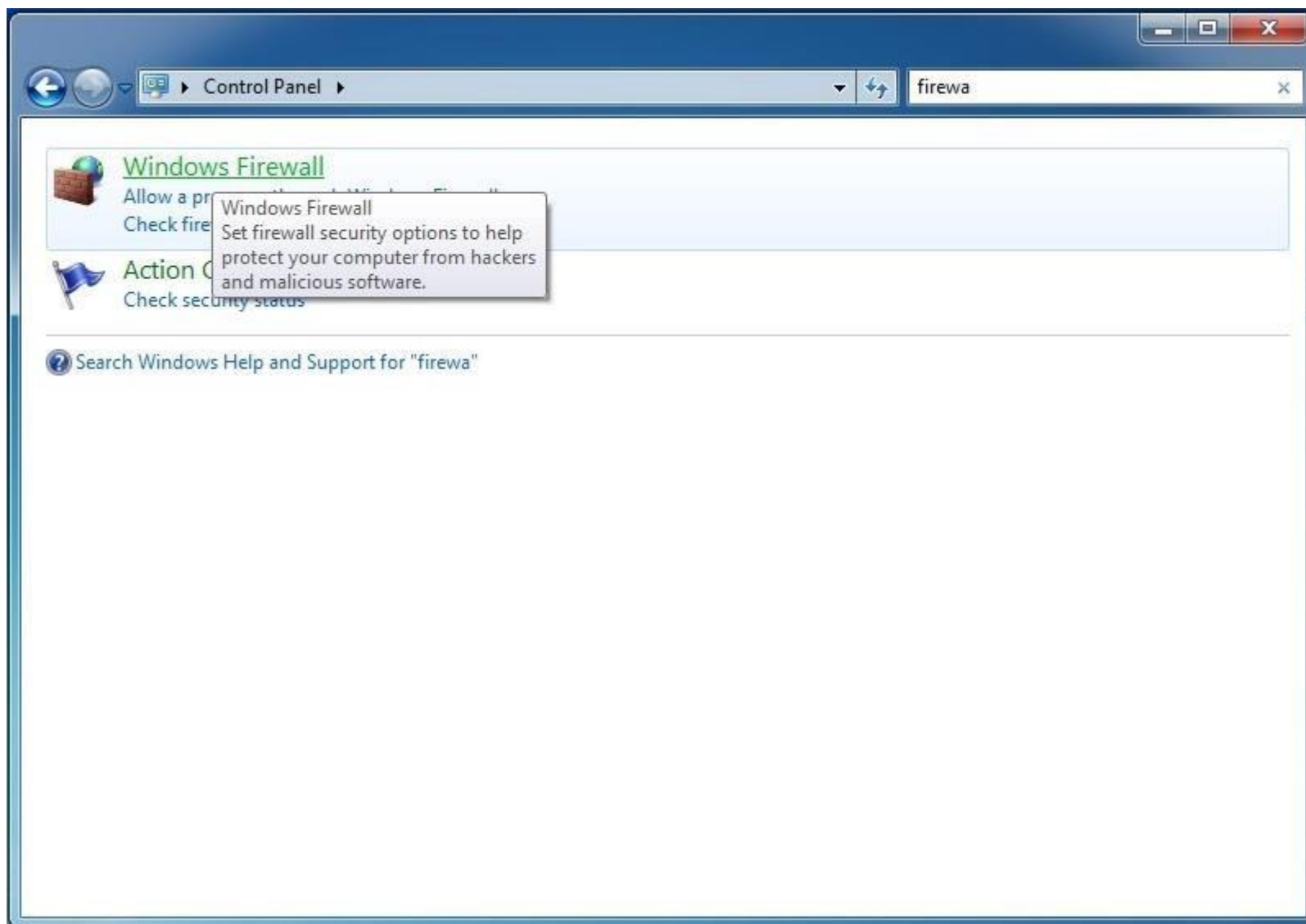
## آموزش Patch Installer

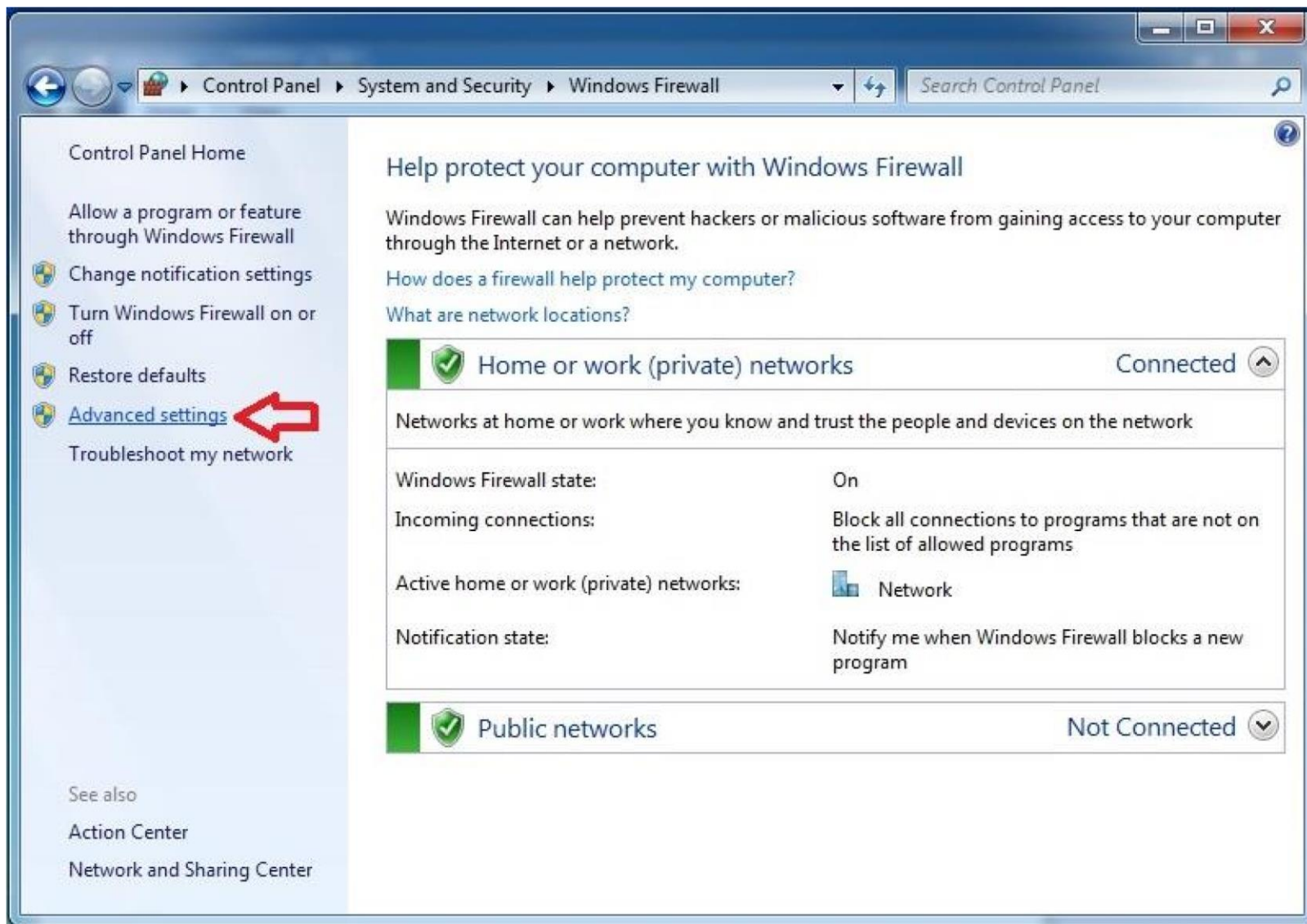
The screenshot shows the 'نرم افزار نصب پچ فرآیند سازان' (Sazan Patch Installation Software) window. It contains the following fields and steps:

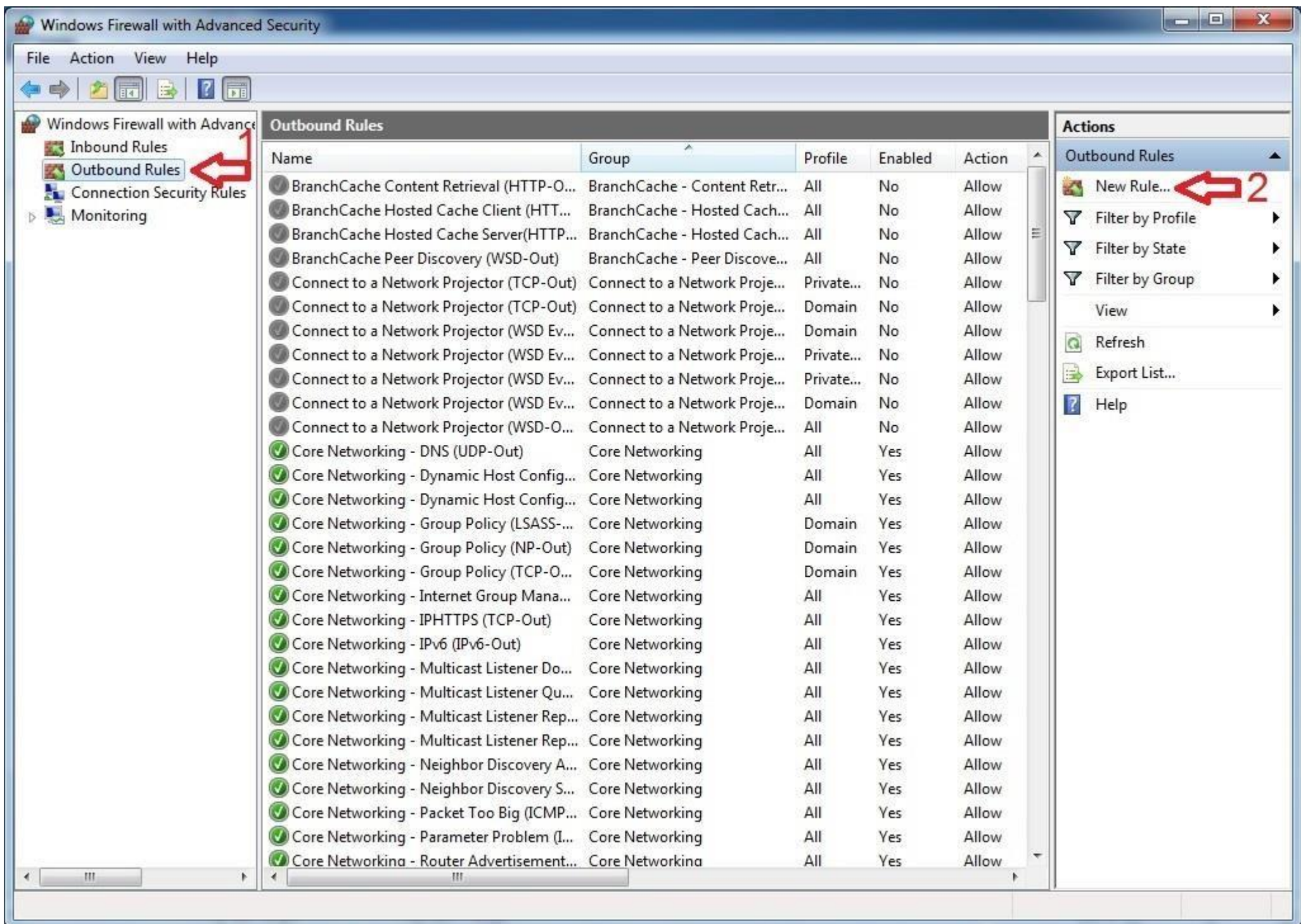
- ارتباط با بانک اطلاعات** (Connect to database):
  - server name : localhost
  - Login : sa
  - 1 Password : \*\*\*\*\* (with a red arrow pointing to the text 'farayandsazan')
- ایجاد ارتباط با سرور** (Create connection with server):
  - 2 (indicated by a red arrow)
- مسیر خواندن فایل patch** (Patch file reading path):
  - 4 File Path : C:\FSSM\Application\Patch (with a red arrow pointing to the browse button)
- محل نصب patch** (Patch installation location):
  - 5 EXE : C:\FSSM\Application (with a red arrow pointing to the browse button)
  - 3 DataBase : fssdb (with a red arrow pointing to the dropdown arrow)
- محل ایجاد فایل لاگ** (Log file creation location):
  - 6 File Path : D:\Patch (with a red arrow pointing to the browse button)
- Version : 2-10-0-1**  
**Patch : 10**
- Buttons: **انصراف** (Exit) and **نصب 7** (Install) (with a red arrow pointing to the Install button)

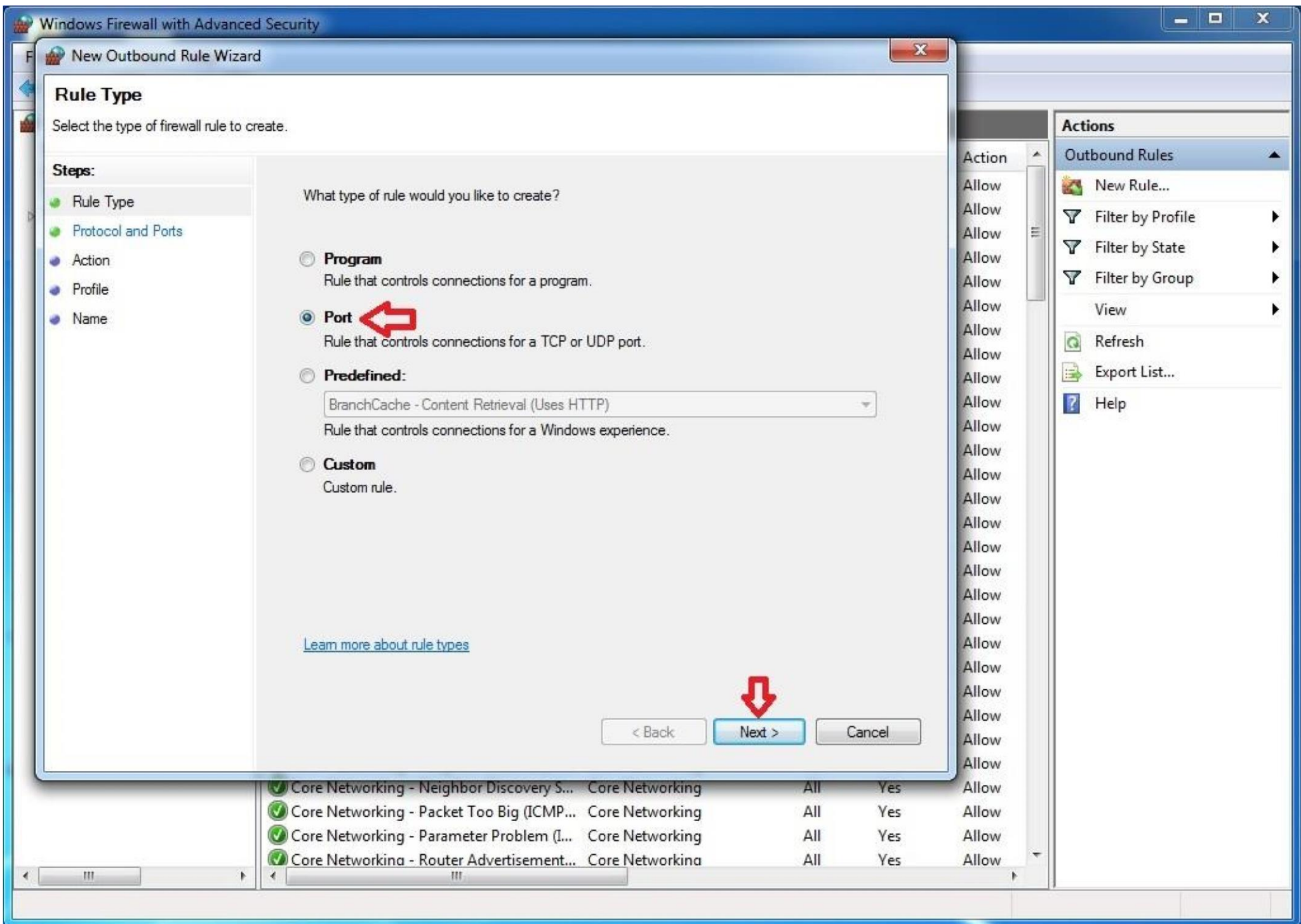
چنانچه در زمان اجرای برنامه در محیط شبکه (نه در سرور) با خطای Named Pipe و Timed Out مواجه شدید و حتی از صحت کارکرد Named Pipe بعنوان سرویس فعال اطمینان حاصل کردید و همچنان این خطا وجود داشت، می بایست به سمت فایروال نصب شده بر روی سرور رفته و چک گردد که پورت ۱۳۲۶ در Exception اضافه گردیده است یا خیر. چنانچه Exception در ۶۲۳۱ حاصل کردید و همچنان این خطا وجود داشت، می بایست به سمت فایروال نصب شده بر روی سرور رفته و چک گردد که پورت موجود نبود باید اضافه گردد تا سرور اجازه اجرای برنامه در محیطی بیرون از سرور بر روی دیگر کامپیوترها را بدهد. (پیشنهاد می گردد برای جلوگیری از خطاهای احتمالی فایروال را خاموش نمائید!)

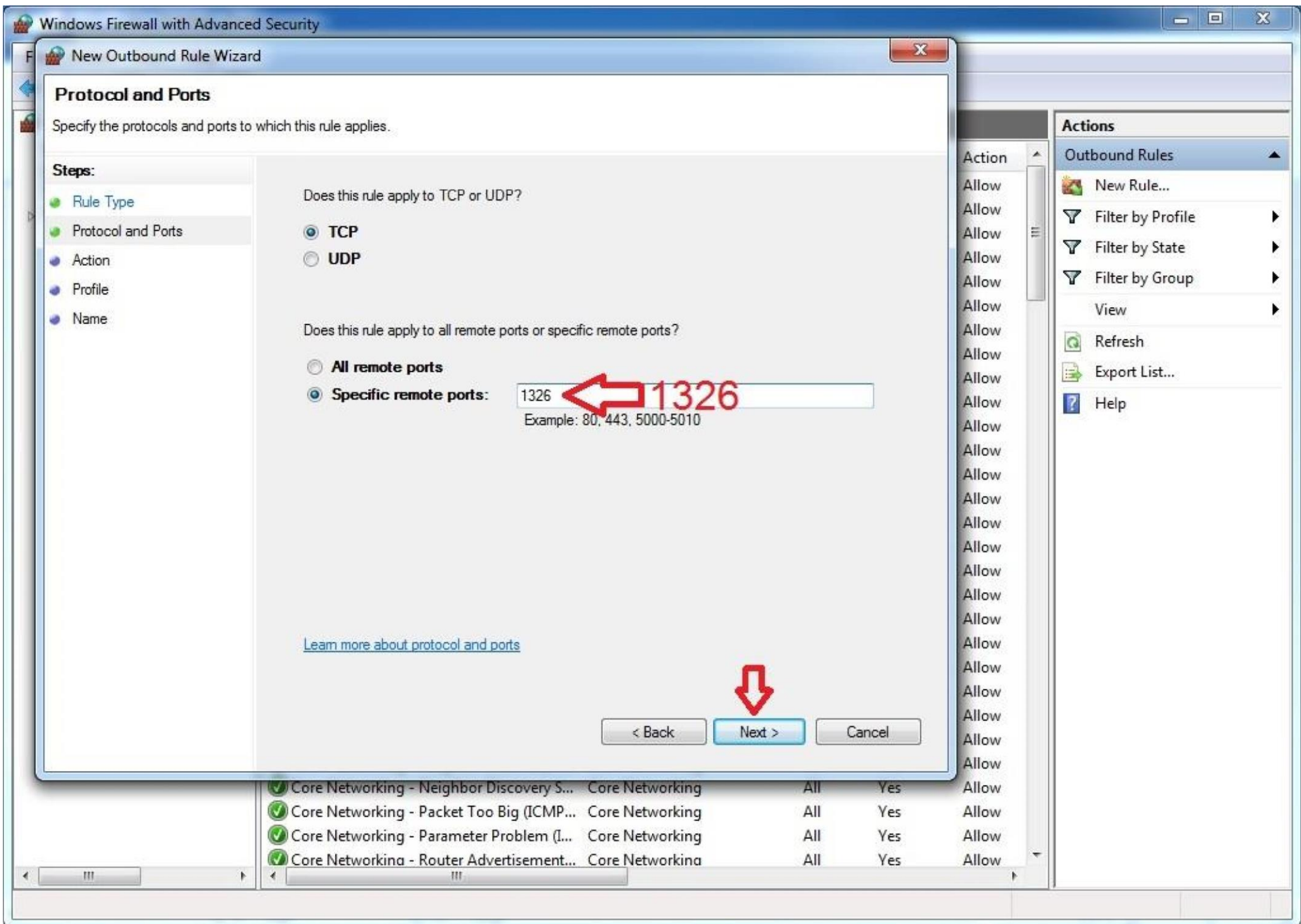
به طور پیش فرض امکان اضافه کردن این پورت در فایروال ویندوز ۷ در تصاویر زیر توضیح داده شده است:

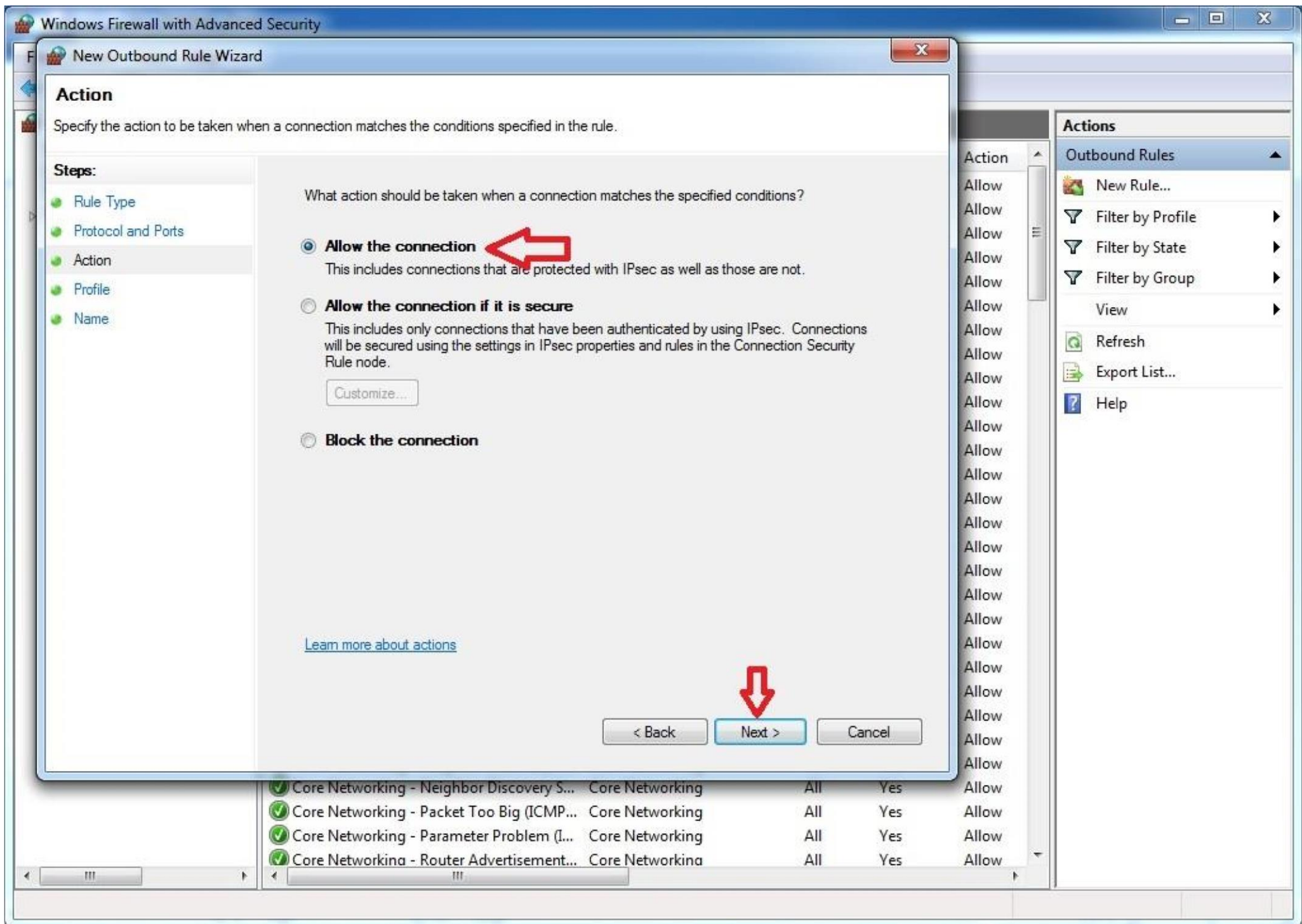


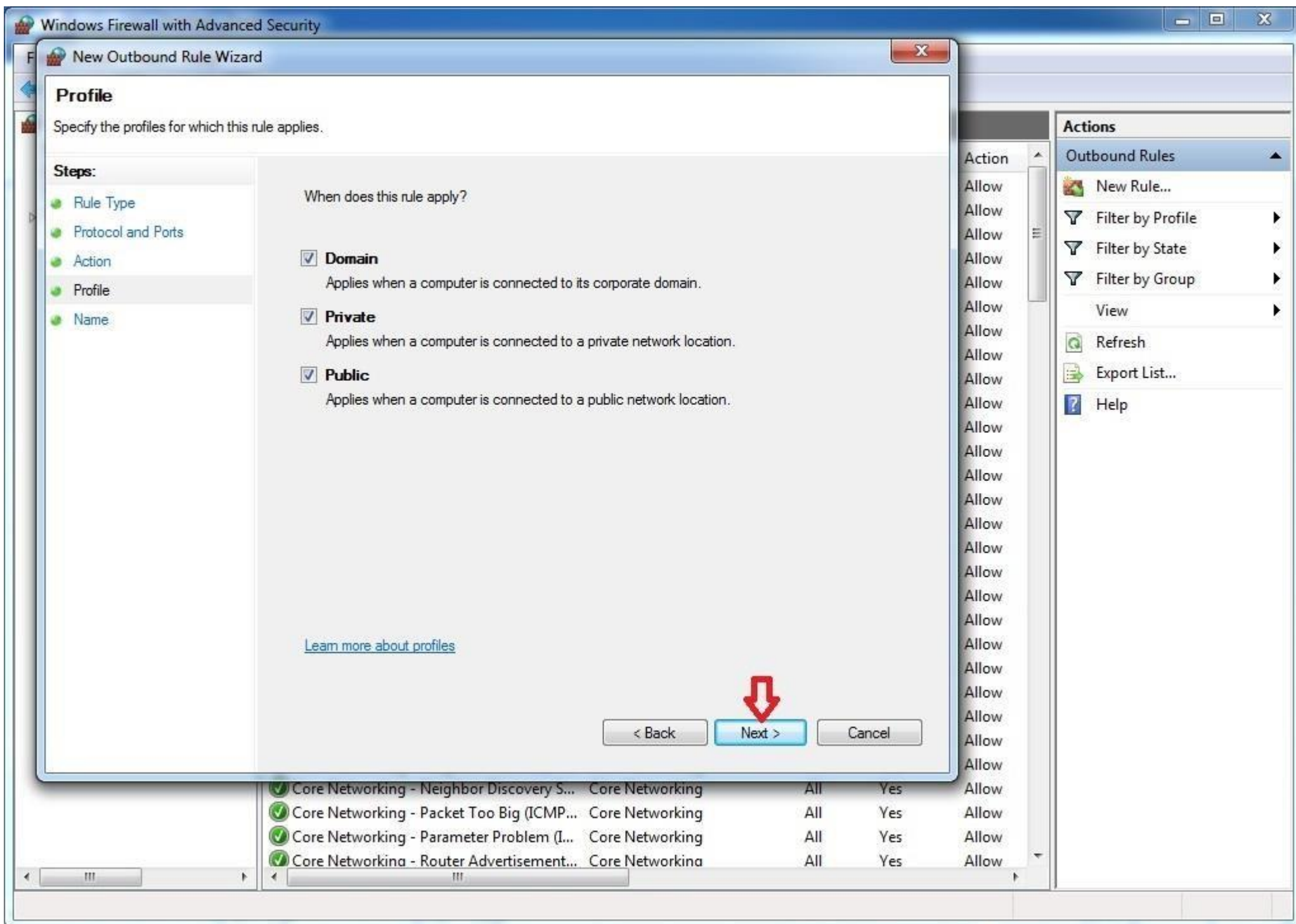


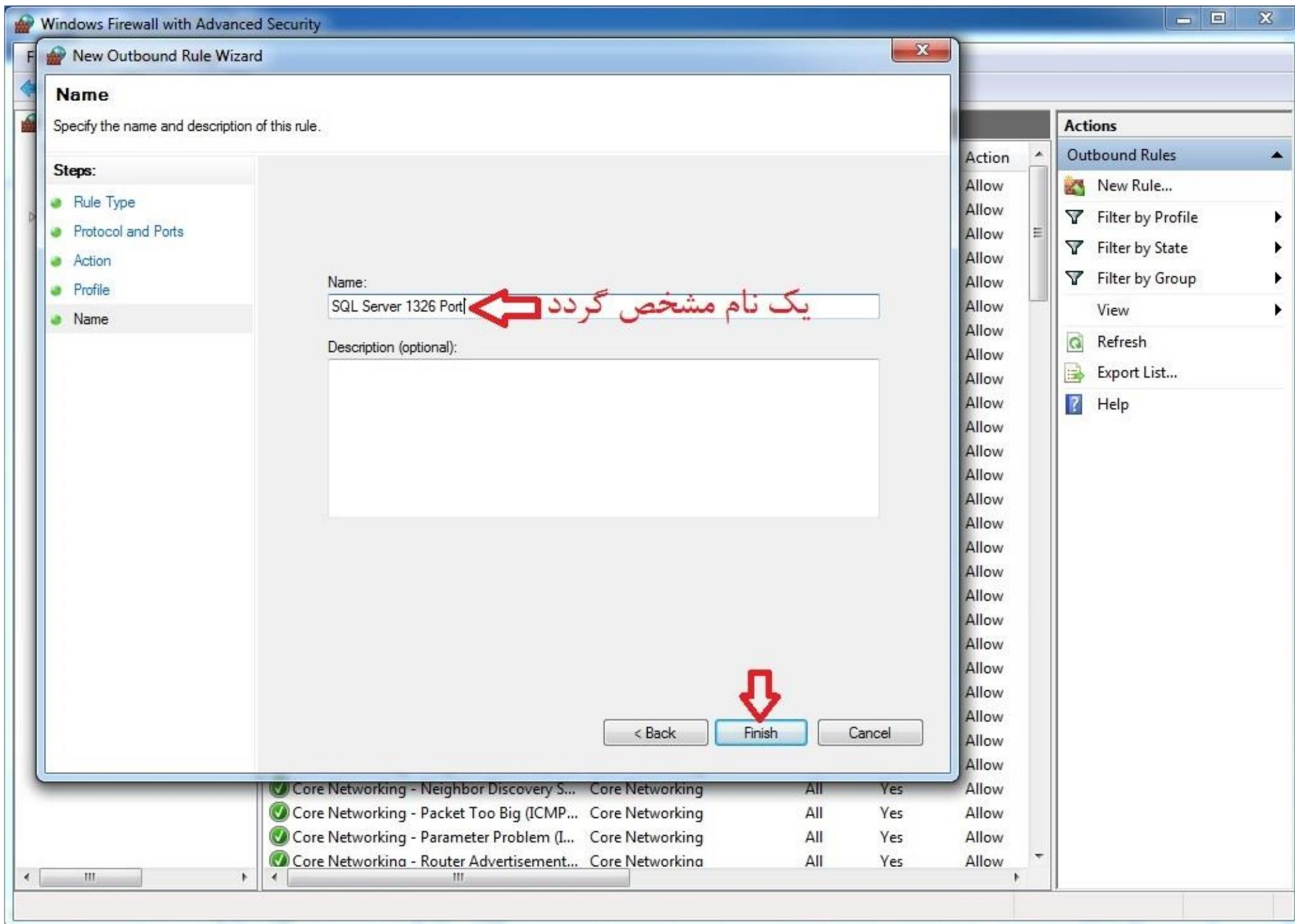






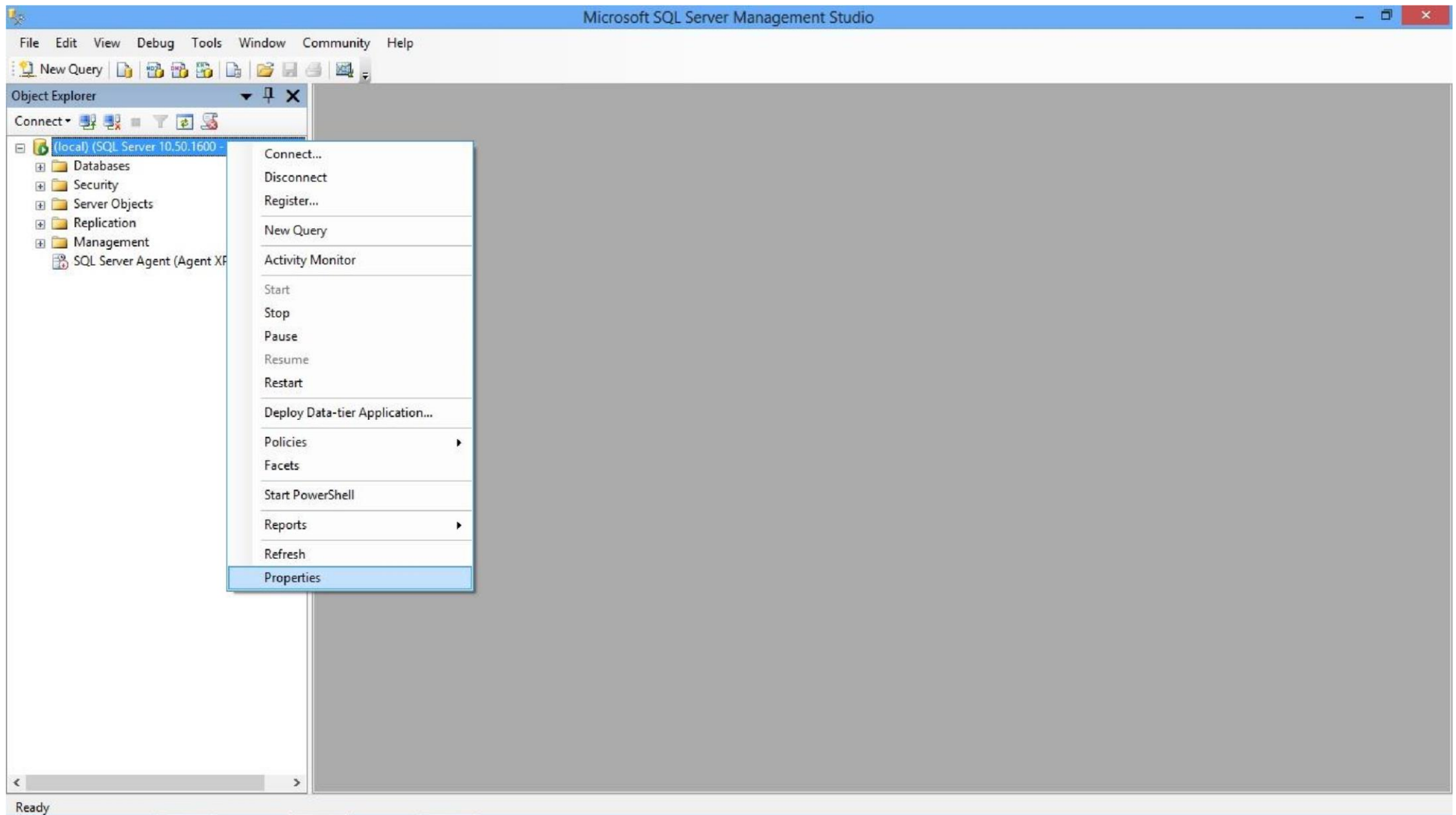




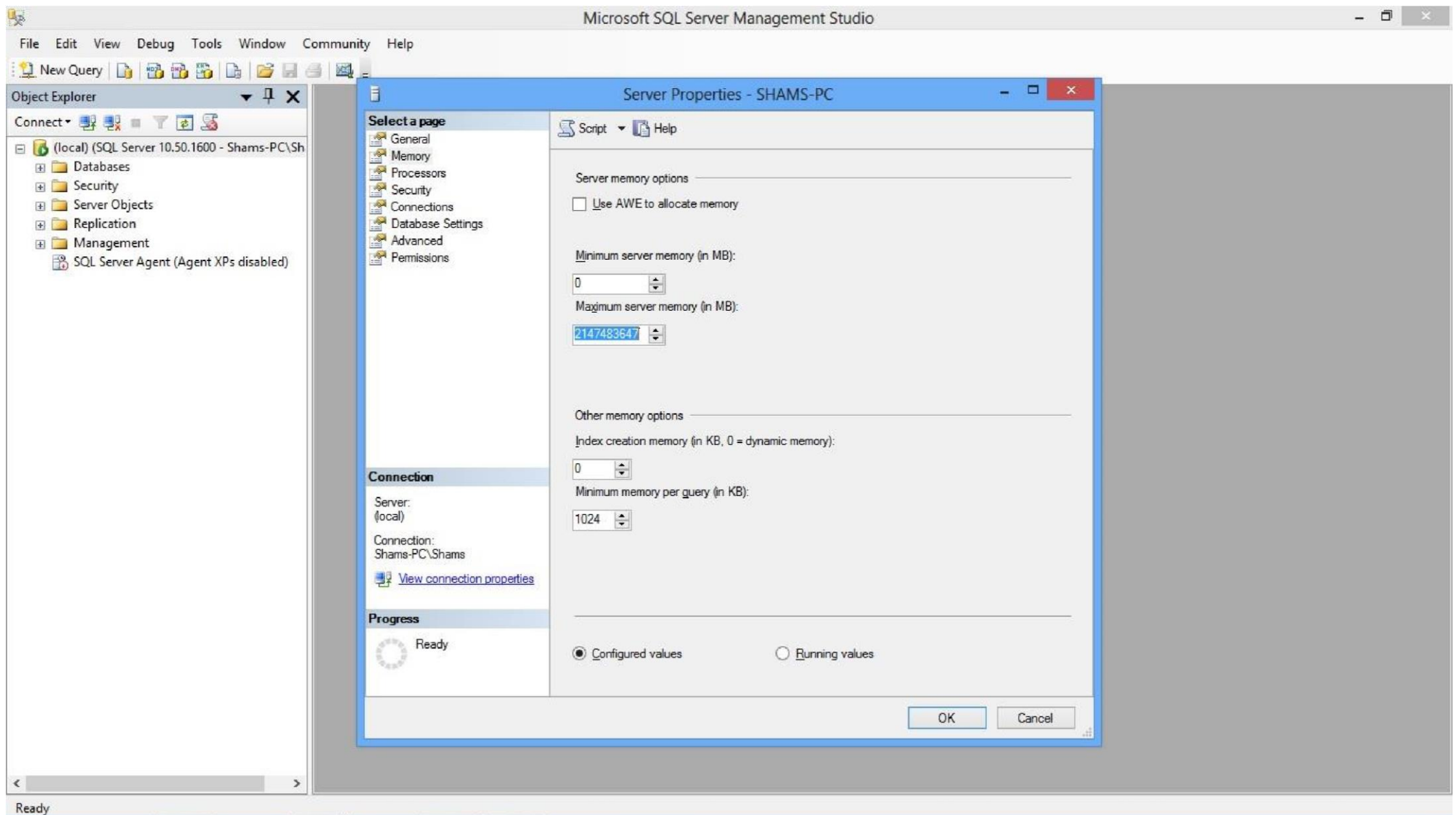


## آموزش تنظیم مدیریت حافظه (رم) در SQL Server 2008 R2

برای تنظیم مقدار حافظه پیش فرض استفاده شده سرور در SQL Server می بایست طبق شکل اقدام گردد::

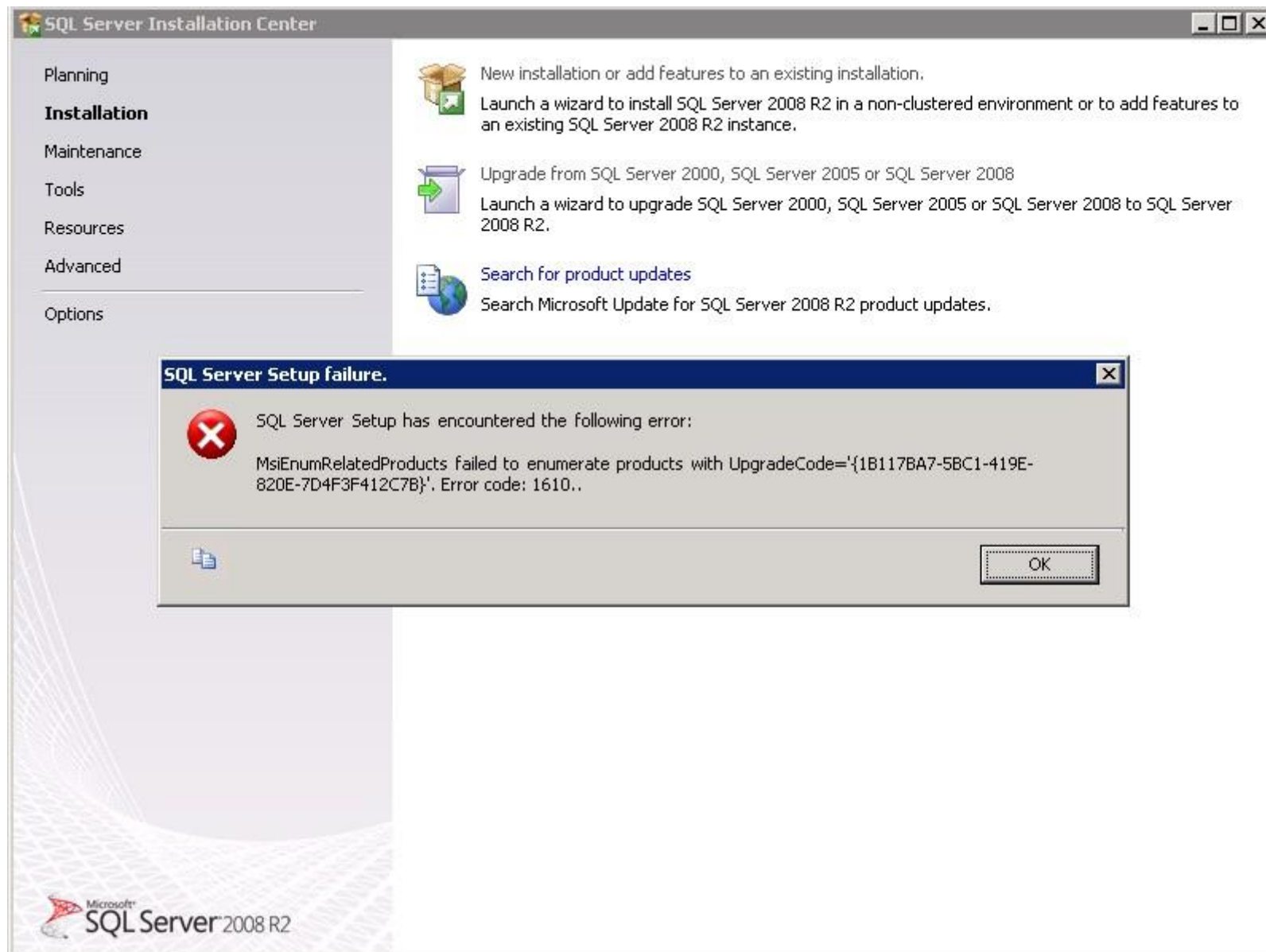


پس از کلیک بر روی Properties طبق شکل بعدی اقدام گردد:

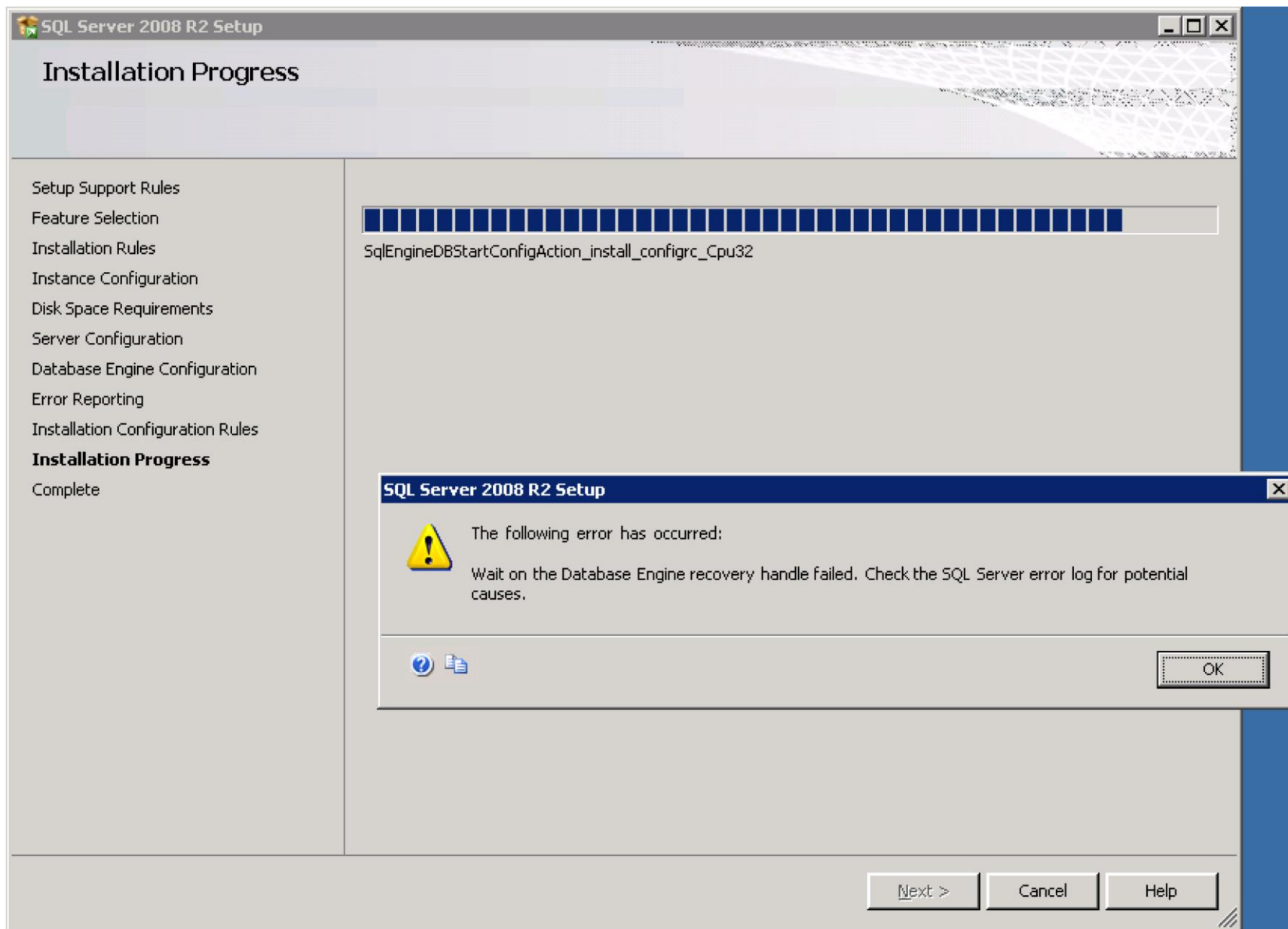


حال مقدار Maximum server memory (in MB) را با توجه به جدول زیر تنظیم نمائید:

مقدار رم سرور	مقداری که باید در <b>SQL Server</b> تنظیم گردد
8 GB=8192MB	7GB=7168MB
6 GB=6144MB	5GB=5120MB
4 GB=4096MB	3GB=3072MB
2 GB=2048MB	1GB=1024MB یا 1.5GB=1536MB



اگر چنانچه در زمان نصب SQL Server 2008 R2 با خطاهای مشابه دو تصویر آخر مواجه شدید حتماً چک نمائید که اگر MSXML6 بر روی سیستمتان نصب شده ابتدا آن را حذف نمائید و سپس از نصب صحیح dotNet Framework بر روی سیستمتان اطمینان حاصل نمائید.



این دو خطا بیشتر در ویندوزهای دستکاری شده پیش می آیند و بر روی ویندوزهای اورجینال مایکروسافت چنین خطاهایی وجود نخواهند داشت!